

MARTÍN SICHETTI



HVCHÉ

MARTÍN SICHETTI



Kadok. Serie | Series Stills, 2025

Lápiz y pastel sobre papel | Pencil and pastel on paper

30,5 x 40,5 cm | 12 x 15.9 in

Inventario | Inventory: MS0224

USD ~~2.000~~ USD 1.500

HVACHE

MARTÍN SICHETTI



Retrato de Rebecca de Winter. Serie | Series Personæ, 2022

Lápiz y pastel sobre papel | Pencil and pastel on paper

100 x 70 cm | 39.4 x 27.6 in

Inventario | Inventory: MS0165

Exhibida en | Exhibited in:

Personæ, curaduría | curated by María Fernanda Pinta, Hache galería,
Buenos Aires, Argentina, 2023

USD ~~3.500~~ USD 2.620

HACHE

MARTÍN SICHETTI



Biombo escópico. Serie | Series Personæ, 2023

Lápiz y pastel sobre papel, biombo de madera con mirilla | Pencil and pastel on paper, wooden screen with peephole
175 x 52 x 50 cm | 68.9 x 20.5 x 19.7 in

Inventario | Inventory: MS0181

Exhibida en | Exhibited in:

Personæ, curaduría | curated by María Fernanda Pinta, Hache galería, Buenos Aires, Argentina, 2023

USD ~~3.500~~

USD 2.620

MARTÍN SICHETTI



Sophie. Serie | Series Personæ, 2023

Lápiz y pastel sobre papel | Pencil and pastel on paper

21,5 x 41 cm | 8.5 x 16.1 in

Inventario | Inventory: MS0182

Exhibida en | Exhibited in:

Personæ, curaduría | curated by María Fernanda Pinta, Hache galería, Buenos Aires, Argentina, 2023

USD ~~1.000~~ USD 750

HACHE

MARTÍN SICHETTI



Cómo desaparecer. Serie | Series *Personæ*, 2023

Lápiz y pastel sobre papel | Pencil and pastel on paper

50 x 70 cm | 19.7 x 27.6 in

Inventario | Inventory: MS0168

Exhibida en | Exhibited in:

Personæ, curaduría | curated by María Fernanda Pinta, Hache galería, Buenos Aires, Argentina, 2023

USD ~~2.000~~ USD 1.500

MARTÍN SICHETTI



Retrato de su muerte. Serie | Series Personæ, 2023
Lápiz y pastel sobre papel | Pencil and pastel on paper
50 x 70 cm | 19.7 x 27.6 in
Inventario | Inventory: MS0166

USD ~~2.500~~ USD 1.870

HVCHE

MARTÍN SICHETTI



La cosa sublime. Serie | Series Fatale, 2021

Lápiz y pastel sobre papel | Pencil and pastel on paper

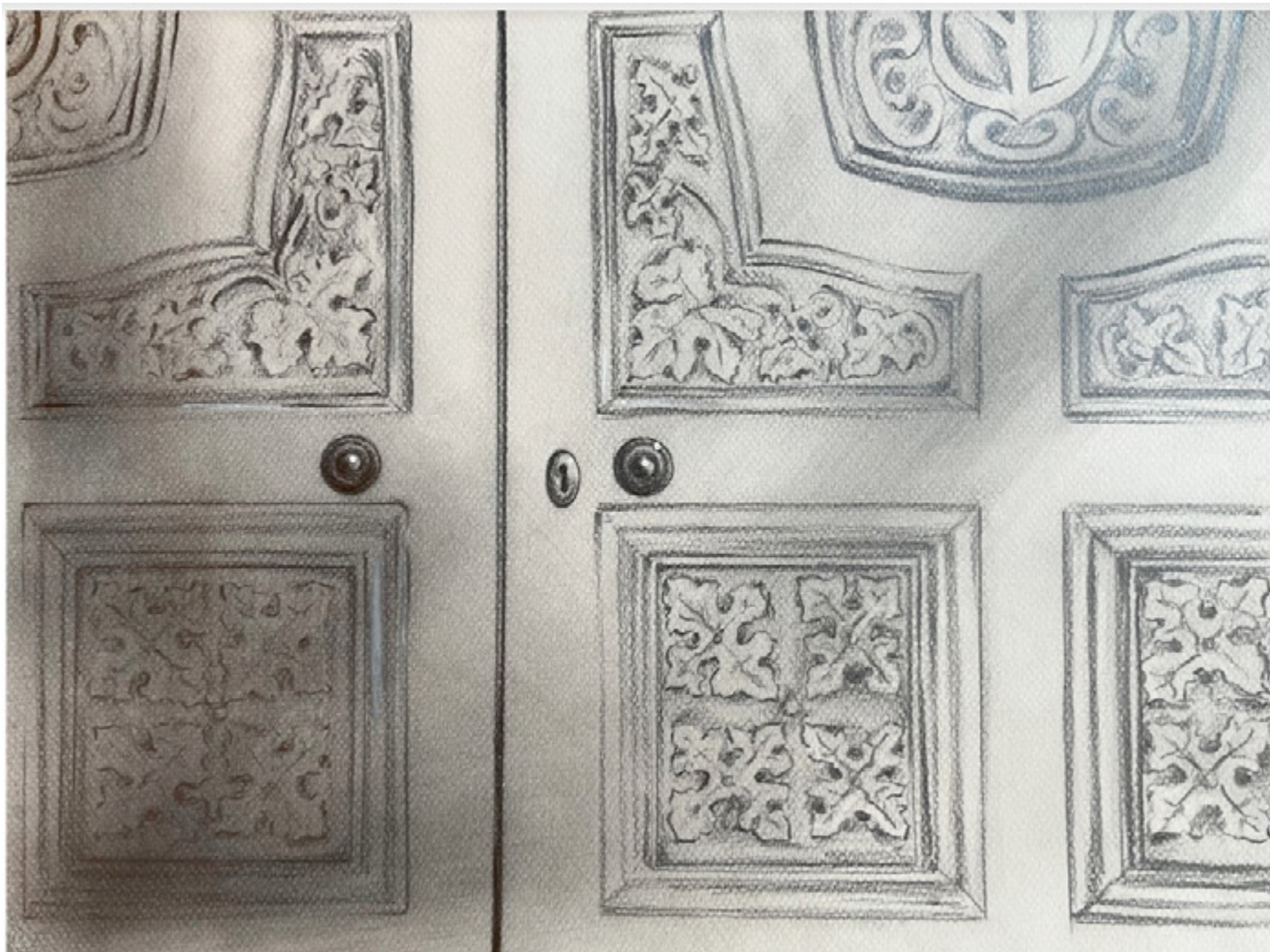
49 x 152,5 cm | 19.3 x 60 in

Inventario | Inventory: MS0146

USD ~~3.500~~ USD 2.620

HVACHE

MARTÍN SICHETTI



LA COSA SUBLIME (P.A.). Serie | Series Fatale, 2021

Lápiz sobre papel | Pencil on paper

30,5 x 40,5 cm | 12 x 15.9 in

Inventario | Inventory: MS0156

USD ~~1.000~~ USD 750

HVACHE

MARTÍN SICHETTI



Manchester. Serie | Series Random, 2021

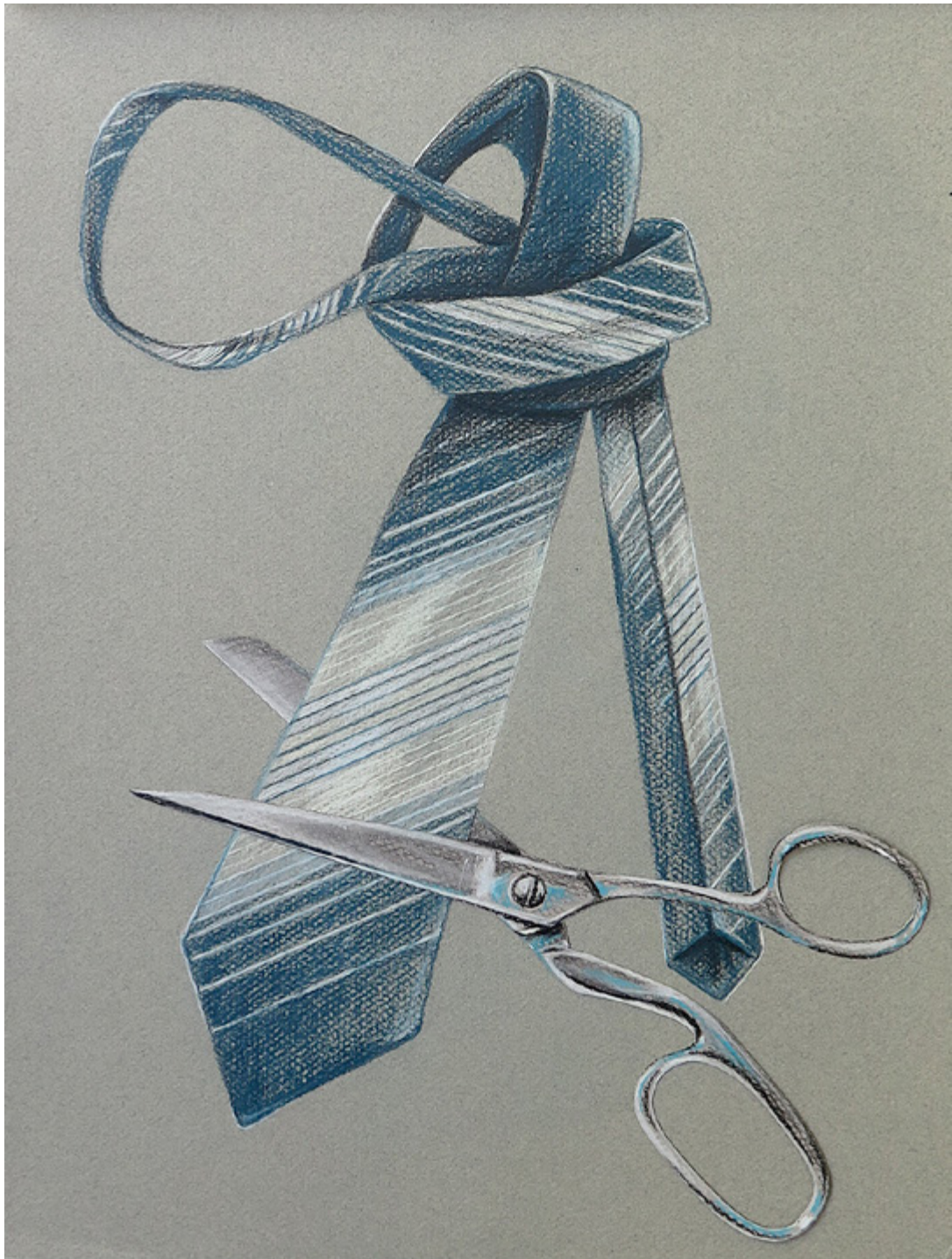
Lápiz, pastel y collage sobre papel | Pencil, pastel and collage on paper

22 x 76 cm | 8.7 x 29.9 in

Inventario | Inventory: MS0150

USD ~~2.000~~ USD 1.500

MARTÍN SICHETTI



S/T (Frenzy Murder). Serie | Series Random, 2021

Lápiz, pastel y collage sobre papel | Pencil, pastel and collage on paper

40 x 30 cm | 15.7 x 11.8 in

Inventario | Inventory: MS0148

USD ~~2.000~~ USD 1.500

HACHE

MARTÍN SICHETTI



1091 Rue La Fleur. Serie | Series Fatale, 2018

Collage, lápiz, pastel, papel y terciopelo | Collage, pencil, pastel, paper and velvet

30.5 x 40 cm | 12 x 15.7 in

Inventario | Inventory: MS0096

Exhibida en | Exhibited in:

Film Fatale, curaduría | curated by Florencia Qualina, Hache galería, Buenos Aires, Argentina, 2019

USD ~~2.000~~ USD 1.500

HACHE

MARTÍN SICHETTI



Marnie. Serie | Series Retratos de familia, 2016

Lápiz y pastel sobre papel montados en passepartout | Pencil and pastel on paper mounted on passepartout

80 x 120 cm | 31.5 x 47.2 in

Inventario | Inventory: MS0077

Exhibida en | Exhibited in:

Salón Nacional de Rosario, Rosario, Argentina, 2018

MICROFILMSO, Hache galería, Buenos Aires, Argentina, 2016

USD ~~3.500~~ USD 2.620

MARTÍN SICHETTI



Birds. Serie | Series Retratos de Familia, 2018

Lápiz, pastel y marcador sobre papel | Pencil, pastel and marker on paper

80 x 120 cm | 31.5 x 47.2 in

Inventario | Inventory: MS0111

USD ~~3.500~~ USD 2.620

MARTÍN SICHETTI

(BUENOS AIRES, 1973)

Tomando como punto de partida el lenguaje cinematográfico, predominantemente el de Alfred Hitchcock, John Houston, Fritz Lang, Billy Wilder, y también recuperaciones, como ida lupino, Martín Sichetti selecciona stills de películas para después trabajarlos en dibujos. Los videos y las performances, a su vez, se nutren de disparadores narrativos propios del cine.

De formación autodidacta, su relación con el dibujo se remonta a la infancia; período en el que también abreva su pasión por el cine. Esa pasión cinéfila también se ve reflejada en la realización del video Darling Pet Monkey (2011), basado en una escena del clásico Film Noir de Billy Wilder, Sunset Boulevard (1950).

Pursuant to exhaustive research driven by love and knowledge of film by classic authors like Alfred Hitchcock, John Huston, Fritz Lang, and Billy Wilder, but also by lesser-known figures like Ida Lupino, Martín Sichetti selects stills that he later reworks in drawings, videos and performances triggered by film narrative devices.

As a self-taught artist, his relationship with drawing goes back to childhood; a period in which he also reaffirms his passion for film. His passion for film is also reflected on Darling Pet Monkey (2011), a video he produced based on a scene from Billy Wilder's classic film noir, Sunset Boulevard (1950).

[Click here to download full CV](#)

www.martinsichetti.com/

www.hachegaleria.com/artista/martin-sichetti/